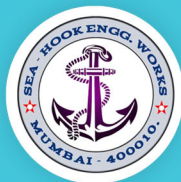


GOVERNMENT (DGFASLI/DISH) AND IRS APPROVED TESTING HOUSE



AN ISO
9001:2015
CERTIFIED
COMPANY



SEAHOOK
ENGINEERING WORKS

Quality System

Sea-Hook Engineering works scope of work is expanded as having its own 300 Tons Capacity Government Certified under DOCK WORKER REGULATION (DWR) 1990 & FACTORY ACT, 1948 (INDUSTRIAL) for Testing, Examination and Certification.

“ The oneness of Management & Staff of SHEW ensures co-ordination and perfect .execution of the assigned ”



SEAHOOK
ENGINEERING WORKS

LIST OF MACHNERY & EQUIPMENTS

Horizontal Testing Machine (Calibrated with NABL)	500 Tons	1 No.
	200 Tons	1 No.
Vertical Testing Machine (For Pipes & Beam Spreaders)	150 Tons In-house	1 No.
Portable Hydraulic Testing Machine	50 Tons	1 No.
	25 Tons	1 No.
Hydraulic Jack	250 Tons	1 No.
	150 Tons	1 No.
	80 Tons	1 No.
Digital Load Cells	300 Tons	1 No.
	200 Tons	1 No.
	150 Tons	2 Nos.
	125 Tons	2 Nos.
	90 Tons	2 Nos.
	70 Tons	4 Nos.
	50 Tons	1 No.
Dyanameter (Dead Weight)	30 Tons	1 Nos.
	5 Tons	4 Nos.
	4 Tons	4 Nos.
	Upto 300 Tons can be provided on order	Upto 175 Tons
	Water Bags	Upto 400 Tons
	Hardness Testing Machine	1 No.
Ferrule Cimping Machine	Upto 76mm	
Hydraulic Jack	4 Nos. (5 Tons - 250 Tons)	
NDT Facility Available	MI, LPT, UT, VT	
Fabrication of Spreader (I-Beam & Pipe Spreader)	As per requirements	



The background of the slide is a collage of maritime engineering images. It includes a close-up of a bollard pull test with a thick wire rope, a view of a ship's deck with large red lifeboats, a yellow spreader beam being tested, and a large yellow anchor being hoisted by a crane on a ship's deck. The central text is overlaid on a semi-transparent blue rectangle.

SERVICES

- ⚓ Bollard Pull Test of Vessels upto 250 Tons
- ⚓ Coiling and Recoiling of Wire Ropes
- ⚓ Installation of Wire Ropes for Cranes
- ⚓ Life Boat Davits and Winches
- ⚓ Servicing of Lifting Tackles (Loose Gears)
- ⚓ Load Test of Cranes upto 250 Tons
- ⚓ Mooring Winches Load Test, Pull Test and Brake Holding Test
- ⚓ Pull Test and Brake Holding Test of Main Tow Winch and Anchor Holding Winch upto 300 Tons
- ⚓ Proof Load Test of Anchors upto 100 Tons
- ⚓ Load Test of Spreader Beams upto 250 Tons
- ⚓ Calibration of Load Cells
- ⚓ Brake Load Test (MBL) of Wire Rope/Chain upto 500 Tons
- ⚓ Load Test of 'A' Frame for Vessel upto 150 Tons
- ⚓ Onsite Load Test of Eye Pods, Smit Bracket upto 150 Tons



SEAHOOK
ENGINEERING WORKS

Personnels Transfer Basket

Prototype approved by DNV

Make: Zainab'O'



Model: Z-501-4

Type: Collapsible

Test Load: 12500 LBS

Safe Working Load: 5600 LBS

Luggage Weight: 160 Kgs

Shelf Life: 2 Years



Model: Z-601-4

Type: Rigid

Max Load: 4 Adults (340 Kgs)

Luggage Weight: 160 Kgs

Rated Work Load: 500 Kgs

Gross Weight: 225 Kgs

Max Test Load: 1100 Kgs

Shelf Life: 8 Years



Model: Z-601-6~8

Type: Rigid

Max Load: 6-8 Adults (680 Kgs)

Luggage Weight: 320 Kgs

Rated Work Load: 1000 Kgs

Gross Weight: 285 Kgs

Max Test Load: 2000 Kgs

Shelf Life: 8 Years

LOAD TEST OF CRANES

Load test of cranes
using water bags
upto 250 Tons

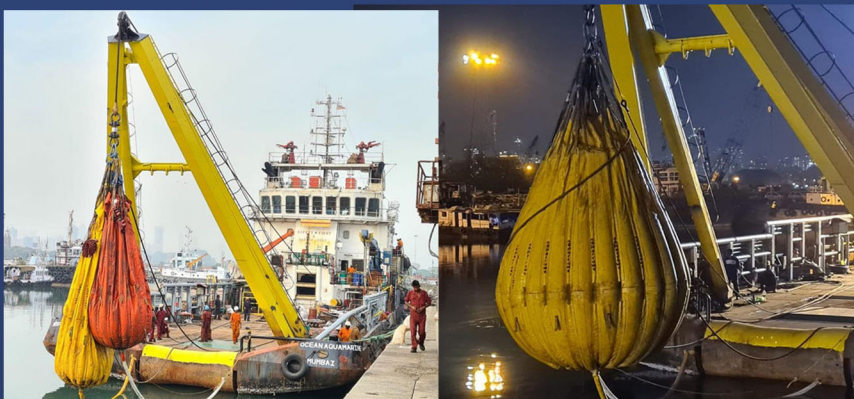


BOLLARD PULL TEST

Bollard Pull Test
upto 250 Tons

WINCH WIRE ROPES

Winding and un-
winding of winch
wire ropes



LOAD TEST OF 'A' FRAME

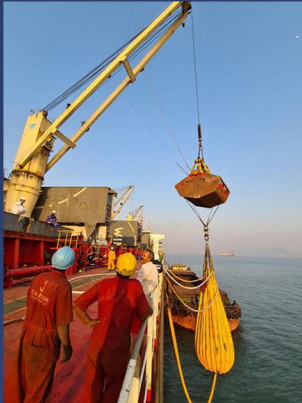
Load test of 'A' frame
with dead weight &
water bags



SEAHOOK
ENGINEERING WORKS

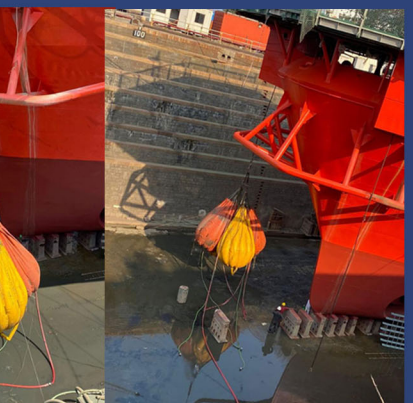
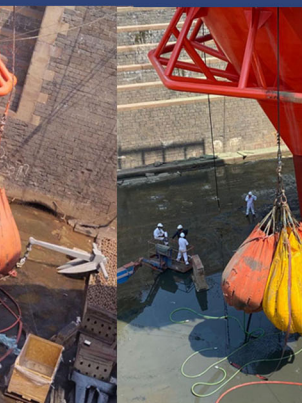
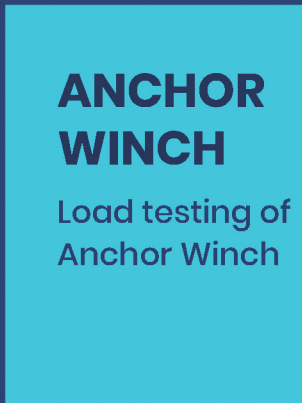
SPREADER BAR

Load testing of
spreader bar



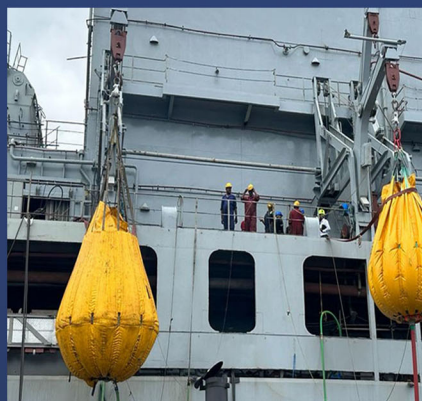
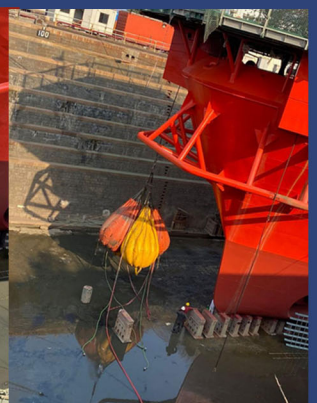
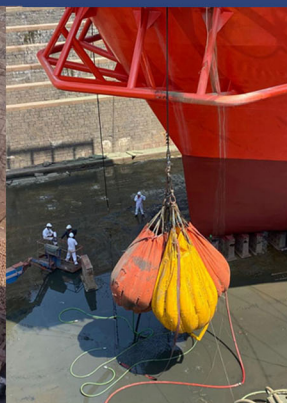
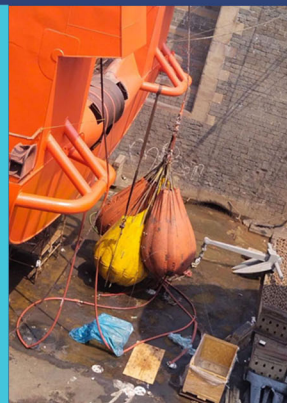
LOAD TEST OF GRAB

Load testing
of Grab



ANCHOR WINCH

Load testing of
Anchor Winch



LOAD TEST OF LIFE BOAT

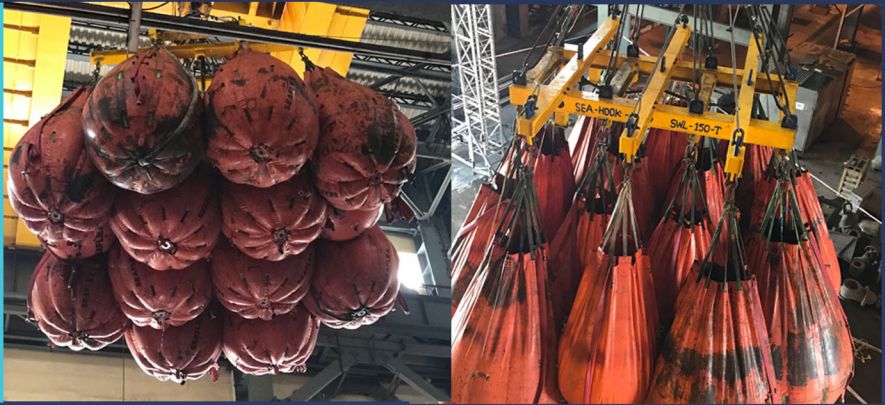
Load testing of
Life Boat



SEAHOOK
ENGINEERING WORKS

EOT CRANE

Load testing
upto 250 Tons
using water bags
and dead weight



TENDIM CRANE

Load testing
of Tendim
Crane



TESTING OF LOAD CELLS

Load testing from
0.5 Kgs to 300 Tons



LOAD TEST OF GANGWAY

Load testing of
Gangway



SEAHOOK
ENGINEERING WORKS



SEAHOOK
ENGINEERING WORKS



SEAHOOK ENGINEERING WORKS

provide services in the field of Offshore/Industrial Sectors for TESTING, SERVICING, REPAIRING, MAINTENANCE of all lifting tackles like Overhead .Cranes, Winches, Slings, BOP and other loose gears

Manufacturers Of

Personnel Transfer Basket

Prototype approved by DNV



Office Address

Shop No.1, BMC (C.S. No. 96), Gunpowder Road, Shri Mahapursh
Mandir Marg, Mazgaon, Mumbai 400010. India

info@seahookew.in, adnan@seahookew.in
+919821283575, +919967350807